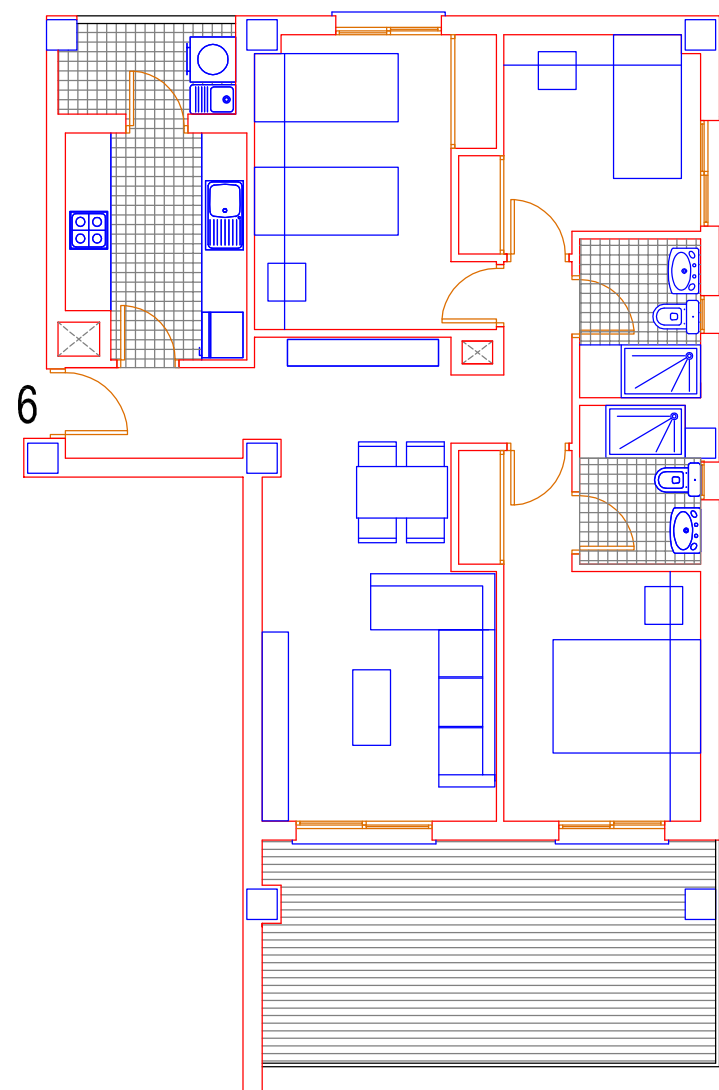




Mil Palmeras de Campoamor

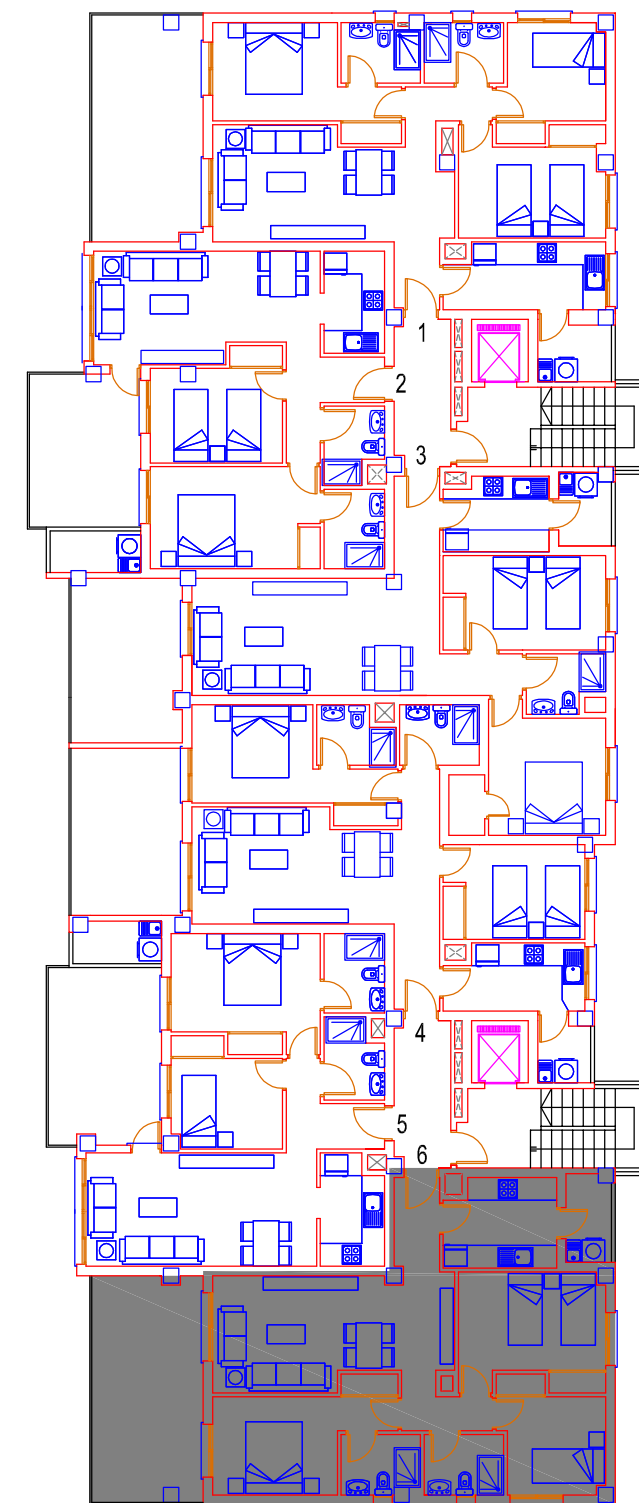
COMPLEJO *Lucerna*

Edificio II



| Sup.Construida | |
|---------------------|---------------|
| TIPO 1º-6 | |
| VIVIENDA | 79,28 |
| LAVADERO | 3,56 |
| TERRAZA CUBIERTA | 18,52 |
| TERRAZA DESCUBIERTA | 0,00 |
| P/P. COMUNES | 8,13 |
| TOTAL | 109,49 |

(PLANTA 1º)



PLANTAS 1, 2, 3, 4 (SOLUCION 2 VIV. TIPO H)

